

THE ROCKHOUNDER

Page 1



October
2010

PURPOSE: The purpose of the Gem, Lapidary, and Mineral Society of Montgomery County MD., Inc. is “To increase knowledge and popular interest in earth sciences, geology, mineralogy, paleontology, lapidary arts, and related subjects”.

REGULAR MEETING: Meetings are held the 2nd Monday of the month from September to June. The Society will meet on **Monday October 11th** in the dining room of the Rockville Senior Center, 1150 Carnation Drive, Rockville. The short business meeting will begin at 7:45 pm but the room is available to us at 7:30 pm so come early and see what you and others have on the Show Table and chat with old friends. **Dr. Dennis Coskren** will speak about **Minerals in the Alum Cave in Tennessee and his discovery of Coskrenite.**



He is a mineralogist and geochemist, and graduate of MIT (BS) and the University of Kentucky (MS, PhD). He has been interested in minerals since high school, when he did a science project in crystallography. He joined the Boston Mineral Club in 1958, and was introduced to the pegmatites of New England. In the late 1980's he became intrigued by the report of a rare sulfate mineral at Alum Cave Bluff in the Great Smoky Mountains, and decided to do a study of the locality to document the minerals there. His investigations found three new minerals, all of which are rare-earth-element sulfate-oxalates. He became a member of a very select group when one of the minerals was named after him.

THE BOARD OF DIRECTORS will meet **Monday Oct. 25th** at the Home of Andy Muir. All Board members are expected to be there. Any member is welcome to attend but please let Andy know if you plan to attend (301 990 1370). **THIS IS THE FOURTH MONDAY, ONE WEEK LATER THAN NORMAL**

Our By-laws state “Any member in arrears as of Oct. 15th shall forfeit membership”.

**IF YOU HAVE NOT PAID DUES, THIS WILL BE THE
LAST ROCKHOUNDER YOU WILL RECEIVE**



A red star on the address label of mailed newsletters indicates non-payment (as of Oct. 1st). If not already done, pay for your Single membership at \$15 per year, or Family membership (Up to 2 adults and children under 18 years of age) at \$20 per year at the October meeting or send to: Membership Chairperson Doug Baum, 11205 Golden Meadow Court, Germantown MD 20876-1740. He will mail your membership card(s) back to you if you send him a self addressed stamped envelope otherwise you may pickup your card(s) at the next regular meeting. Club membership is a requirement for attending most Society field trips. We need you and want you back!

P.S. There is an added \$5.00 fee for renewals after Nov. 1st. Contact Doug <dbaum@gazette.net> or 301 515 4641 for info.



IN THIS ISSUE
Meetings, Dues,

Deadline.....	1
President's Message, New Members, Roster Changes.....	2
Regular Meeting Minutes.....	3
Board Meeting Minutes.....	4
Field Trips.....	5
FRA, Field Trips Continued.....	6
Tourmaline, Birthdays.....	7
Show Table, Prizes.....	8
Shows, Events.....	9
Dinosaur Exhibit, Dinosaur IMAX® Film, National Fossil Day, AGI Expo on Mall..	10
Web Sites, Member News.....	11
Auction of Ballard Collection..	12 & 13

DEADLINE for Nov. 2010 Rockhounder: Oct. 26th



PRESIDENT'S MESSAGE

Greetings,

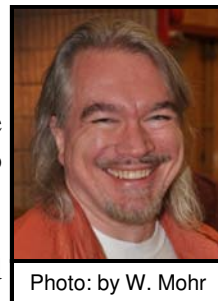
As the weather becomes less cooperative for outdoor rock hounding, it's a good time to take stock of your collection. Club events this winter and spring will allow you to share and show off your collection.

Our Holiday Party is held during our regularly scheduled meeting in December, and it has traditionally included swapping, selling, or just plain sending away your overstock. During the past year, have you . . . upgraded specimens in your collection? . . . gotten carried away on a field trip and brought back more material than you know what to do with? . . . finally admitted you will never finish that certain lapidary project you started oh-so-many years ago? Please consider relocating any of this material to other club members at the Holiday Party.

And while you are culling your collection, think about sending your favorite and most treasured specimens on a field trip to our club show in March. *Now* is the time to begin planning a display case for the show. Your rocks have a story to tell, and making a display for the show is a great way to get that story out to an eager audience. If you've never made a display, don't worry. Club members are willing to help. In fact, they are curious to learn more about what interests you. Don't keep them in the dark! Unless, of course, you are into fluorescent minerals . . .

Looking forward to seeing you at the October meeting.

Eric Kindahl

**WELCOME NEW MEMBERS**

DAY, Susan, 10741 Lake Edge Court, New Market MD 21774-6664, 301 696 3685, days@hood.edu
McCRIGHT, Brent & Ingebord, 902 Pheasant Run Drive, Gaithersburg MD 20878-1137,
240 631 9247, ijm@informatics.jax.org

Jake (6/96), Kevin (8/98), Hannah (8/04)

TIKTINSKY, David & JOSEPHS, Aldeane, 9209 Laurel Oak Drive, Bethesda MD 20817-1937,
301 365 2812, DHT444@yahoo.com

Michael Tiktinsky (12/97)

WANG, Li-Ching & LAI, Krystal, 14706 Rolling Green Way, North Potomac MD 20878-4210,
Li-Ching: phone 301 251 9657, wang1010@gmail.com

Krystal: phone 202 268 3479, krystallai@hotmail.com

Ben Wang (3/96), Alicia Wang (6/98)

YAKOVLEV, Sergiy & Oksana, 15933 Yukon Lane, Derwood MD 20855-2632, 301 987 8754,
Yakovlevs@hotmail.com

Anton (3/93)

ROSTER CHANGES

JAMES, John and Anita Omit phone and e-mail information

OLMSTEAD, Georgia Omit e-mail



TEACHER: What is the chemical formula for the mineral ice? SARAH: H I J K L M N O!!
TEACHER: What are you talking about? SARAH: Yesterday you said it's H to O!

REGULAR MEETINGS MINUTES

The September 13, 2010 meeting was called to order by President Eric Kindahl at 7:49 pm, with approximately 65 people attending. It was M/S/P to approve the minutes of the Board of Directors activity.

FRA: Holly McNeil presented one Rocks and Minerals badge and three Earth Processes badges. Congratulations. Eric Kindahl noted that the club is still in need of a volunteer to lead a second FRA age group class. Also, parents were asked to spend some time in the FRA classroom during the class.

President: Eric Kindahl reminded us that the club is also in need of a bulletin editor to start next year. Please sign up now to learn the ropes. He noted all are welcome at Board meetings, simply call the host ahead of time.

Field Trips: Jonathan Harris reminded us of upcoming trips and announced a new trip to Willis Mountain, see this newsletter for details.

Treasurer: Through Eric, Andy Muir reported that the club finances are in good order. He noted that the member dues are critical to club finances and urged everyone to pay promptly.

Editor: Wendell Mohr brought two issues of Rock and Gem magazine containing articles of interest to the club. One contained an article by Mary Crosswhite and the other contained an article documenting our annual show. He announced an upcoming sale, see this newsletter for details.

Mark Dahlman circulated a sign-up sheet for members to oversee tables during the preview of the upcoming club auction by the club of the Ballard collection. Please contact Mark to help.

An AFMS Certificate of Appreciation was presented in the category of Top 10 Bulletins – Small Bulletins, to our Editor Wendell Mohr.

Presentation: Vice president Owen Powers introduced the speaker for the evening, Dr. Catherine Corrigan. Dr. Corrigan presented *Antarctic Meteorites: Collecting, Classifying, and Curating*. She related, through many wonderful images, her personal experiences of collecting meteorites from stranding surfaces, highly compacted ice that has moved downhill, hit a mountain range, and given up its collected meteorites. The Antarctic Search for Meteorites has collected 18,675 meteorites over 30 years. Future efforts include the reclassification in terms of shock to learn more about the big bombardment 3.9 billion years ago. Dr. Corrigan was generous enough to answer questions from many interested club members. Thanks Cari.



It was M/S/P to accept into membership visitors Susan Day, the McCright family, the Sergiy/Oksana family, the Tikinsky/Joseph family, and the Wang/Dai family. See Roster changes elsewhere in this Newsletter.

Rod Towers administered the door prize drawing for juniors. Mark Dahlman administered the drawings for the door prize and show table prize.

Meeting adjourned at 9:52 pm.

Jeff Cessna, Secretary.

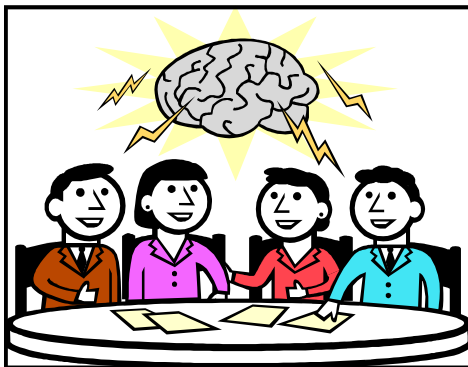
BOARD MEETING MINUTES

Board members present: Doug Baum, Mark Dahlman, Jonathan Harris, Eric Kindahl, Wendell Mohr, Andy Muir, and Owen Powers.

President Eric Kindahl called the September 20, 2010 meeting to order at 7:34 pm.

2011 GLMSMC Officers: Each of the four officers currently serving expressed interest in serving again in 2011. It was M/S/P to nominate this slate for the upcoming elections.

Editor: Wendell reported that Steve Turner, Lillian Turner's son, invited the Society to display some of Lillian's fine collection at our March show; Wendell will coordinate this. The board agreed to encourage the wearing of name badges at Society meetings. We will arrange a "bulk" purchase of name badges later this year at a discounted price for members who do not currently have a name badge. Wendell reminded the group that we can nominate society members for the EFMLS "Each One Teach One" and "Rockhounder of the Year." Several members had trouble hearing the speaker at the last meeting; Mark will research the cost of a wireless lapel mike and speakers. It was M/S/P to discontinue Society awards to students who present earth sciences projects at the Montgomery Area Science Fair. The board discussed logistics for the Oct. 9 auction of the Ballard collection; more volunteers to help run the auction are needed!



Membership Chair: The other board members welcomed Doug Baum to his first board meeting. Doug has been busy processing membership applications and renewals and will be encouraging members who have not renewed yet to do so!

Treasurer: Andy reported that we continue to be in good shape financially. He submitted the required tax documents to the IRS over the summer (after receiving an extension from IRS). We continue to owe no taxes as a 501(c)(3) private non profit organization.

Vice President: Owen has a number of interesting speakers lined up for the next few months.

Field Trips: Jonathan discussed upcoming trips. He continues to explore collecting opportunities at other quarries, however, he sees that many companies have safety concerns about collectors on their property.

Show Chair: It was agreed that only the malfunctioning machinery from our show shop should be repaired, and not all the motors at this time (although they are aging). Mark reported that most dealers from the 2010 show have already expressed interest in participating again in 2011. It was M/S/P to maintain our dealer fees at 2010 prices. It was M/S/P to authorize Mark to spend up to \$150 on materials to build a prototype display case to examine as a model to replace our aging ones. The board is considering a change to our by-laws to split our current one voting board position of "Show Chair" into two voting board positions, the "upstairs show chair" and the "downstairs show chair."

The date of the next board meeting has been changed to Oct. 25; it will be at Andy Muir's home. The meeting was adjourned at 10:04 pm.

Andy Muir, Secretary pro tem.

FIELD TRIPS

Saturday October 23, 8:45 am-to ? Willis Mountain VA Kyanite Mine. Rock type - a kyanite-quartzite. Minerals found--kyanite, rutile, apatite, pyrite.

Please RSVP to Jonathan Harris by the Wednesday before the trip and confirm understanding of the rules. Email (preferred) <jgharris7@gmail.com>, including "Willis Mtn." in the Subject Line, or phone 301-545-0808.

Children 10 and older are welcome if accompanied and supervised by parent.

Joint trip; several other clubs will be present.

Everyone must be at the Willis Mine office **no later than 8:45 pm for the safety briefing.**

Transportation within the mine: People should expect to drive to the collecting area. Low slung sports cars are not recommended. Minivans or normal sedans should be fine as long as drivers are careful.

Departures: People may leave prior to 5 pm, but should plan on **not** returning later (this will just be too hard for the quarry personnel to monitor safely). We must be out promptly at 5pm.

Directions: Note the assembly area is the Scale House.

Take I-270 South to I-495 (outer loop), to I-95. Go West on VA-3 (near Fredericksburg) to VA-20 where you stay left. Stay on VA-20 to US-15 (Near Orange.) Continue on US-15 South to intersection with US-60 (Sprouses Corner.) From the intersection of VA-15 and US-60, go 3-4 miles South on US-15 and turn left on VA-788, Gieseke Road. This is just before you get to Willis Mt. Plant Rd. Keep straight on VA-788 to the scale house assembly area. Do not block any mine traffic to the scales. Roughly 160 miles from Rockville, driving time about 3 hours.

Rules: Get required Mine waiver from Jonathan, sign it, and give it to Jonathan.

Required safety equipment: (Collectors missing required safety equipment will be asked to leave.)

The following equipment is required for everyone, including minors.

Hard Hat (ANSI Z89.1, certified for industrial head protection. These are readily available at home centers and hardware stores. Bike helmets and other sport helmets are NOT suitable.

Steel toed shoes, Eye protection, Gloves, Long pants.

Other safety equipment (we don't check for this, but you should use it!): Sunscreen, drinking water, snacks, rain gear.

Parents are responsible for children and assume all risk. Parents should stay with their children, watch them, and leave with them when they become too restless to be safely monitored. Children must have the safety equipment above.

DO NOT BE A NO-SHOW! Collectors who are late may miss the safety briefing and hence the privilege of collecting. Please be on time!

It is important to obey all instructions of the group leader and quarry employees. Failure to do so or unsafe behavior can lead to a collector being forbidden from future field-trips and other sanctions.

All trips will have a group leader, either the field-trip chair or his designee. Most quarries don't want groups entering without a leader. Refer all your questions to the leader.

If you find a spot and need to get a tool to work it or take a break, leave a tool by it to mark it as a spot. Honor other people's spots.



Continued on Page 6

JUNIOR FUTURE ROCKHOUNDS OF AMERICA “The MOCKS”



CONGRATULATIONS TO:

Trevor Babb, Avery Marsteller & Jennifer Weiss who earned the Earth Process badge, and Ryan Gunnison who earned his Rock & Minerals badge. Well done all!



All Photographs by Mark Dahlman



September meeting recap: We did three “gemstones of the month” – Peridot, Sapphire & Ruby-- to catch up from the summer break. Each MOCKS member, in turn, shared with the group stories of rock and mineral activities they participated in over the summer and showed off newly acquired specimens. Our main meeting program

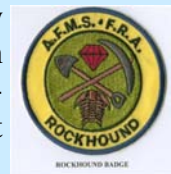


was “Gemstone Lore & Legend.” We were not scientists for this session – but historians and storytellers -- we learned all about the Hope Diamond, the Cullinan I, and the Koh-I-Noor. While there was much more to cover – we ran out of time.

October 11th meeting Space....the final frontier....We will start with the first badge requirement and improve our knowledge of and model our solar system. Time permitting; we'll play a game to reinforce our knowledge.

November 8th meeting: We have scheduled a guest lecturer, Mark Dahlman, who will help us continue working toward the “Earth in Space” badge by covering one of his areas of expertise – meteorites.

The Future Rockhounds of America program, as operated by the Gem, Lapidary & Mineral Society of Montgomery County, is open to youths ages 10-15 with an interest in Rocks & Minerals and related Earth Sciences. Meetings are the second Monday of the month from 7:45-9:00pm. Please contact Holly McNeil at fra_advisor@glmsmc.com or 301-605-7179 for more information.



FIELD TRIPS (Cont'd from page 5) Don't "claim" any spot you are not currently working, unless you are merely getting equipment to help you work it or taking a break. Let others have the joy of discovery. If you claim more than one spot at a time, don't complain if someone starts working one of them.

Collecting equipment: water--for drinking and rinsing potential specimens, newspaper--for wrapping specimens, boxes, five gallon bucket (or something similar for schlepping things around), 3 to 5 pound blacksmith's hammer or hand held sledge (do not use carpenter's hammers!), cold chisels or masonry chisels. (Use wood chisels only if you enjoy ruining your tools and showering yourself and your friends with shrapnel), long handle 8+ pound wrecking hammer--for breaking big boulders, old pocket knife or small screw driver for prying apart small delicate specimens, magnifying glass for examining smaller specimens, camera.

ALTERNATE OCTOBER BIRTHSTONE, TOURMALINE

by Joy Bourne

Chemistry (Li,Na,Ca)(Fe,Mg,Mn,Al)₃(Al,Fe)₆(BO₃)₃Si₆O₁₈(OH,F)₄, an Aluminum Boro Silicate
(with a wide variety of substitutions)

Properties:

Crystal: Hexagonal (long prismatic, striated, with a rounded triangular cross section.)

Refractive Index: 1.616 - 1.652, Hardness: 7 - 7.5, Specific Gravity: 3.0 - 3.3, Fracture: uneven,

Cleavage: none.

Environment: Found in igneous and metamorphic rocks, in schists, pegmatites, and hydrothermal replacement deposits.

The name, "Tourmaline," comes from the Sinhalese word "Turamali" which was given to mixtures of unidentified gem gravels in Ceylon (now Sri Lanka).



Two notable properties of tourmaline are:

- 1) The stone is insoluble in acids and
- 2) The mineral has strong pyroelectric, and piezoelectric properties. The first term, pyroelectric means that the stone becomes strongly electrified when heated, as I first learned in science class where the teacher heated a tourmaline crystal over an alcohol lamp and then passed it over a classmate's head - his hair literally stood on end! This

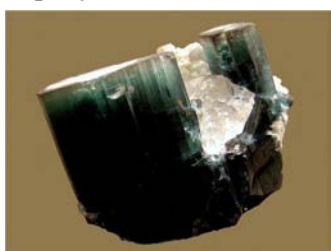
pressure/electric relationship is utilized in industry in high pressure gauges.

As noted in the property list above, tourmaline comes in just about every color in the rainbow. In addition, it is also known for displaying several colors in the same gemstone. These bi-color or tri-color gems are formed in many combinations; gemstones with clear color distinctions are especially prized.

The various colors are caused by slight differences in the chemical formulae - hence, colored varieties bear differing names, as follows:

Pink to red tourmaline is called rubellite. Black tourmaline is named shorl. Dravite is garnet-red, or brown; uvite is white tourmaline; green or greenish-blue shades are called elbaite and the highly prized dark-blue tourmaline is called indicolite. One multi-color variety is known as watermelon tourmaline, and features green, pink, and white colors bands; to resemble its namesake.

Tourmaline is found in many localities including Afghanistan, Brazil, East Africa, Sri Lanka and in the USA, principally Maine and California.



References:

Pough, Frederick H., *A Field Guide to Rocks and Minerals*. Fourth Edition. Houghton Mifflin Company, Boston, New York. 1983.

Dictionary of Geological Terms, Prep. by The National Academy of Sciences for American Geological Institute. Dolphin Books. 1962.

<www.theimage.com/gemstone/tourmaline/tourmaline.html>

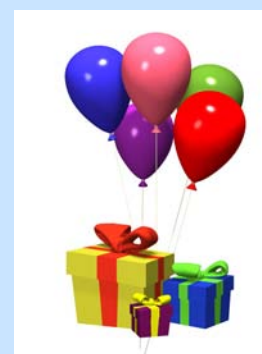
<www.americangemsociety.org/birthstones.htm>

From Shin Skinner News, Oct 2007

Photos Credit R. Weller/Cochise College

OCTOBER MEMBER BIRTHDAYS

Kathy Bowman, Ken Carter, Thomas Caton, Cassie DeSalvo,
Jonathan Ertman, Tristsan Gallagher, Stephanie Hald, Patrick Haynes,
Matthew Hennessey, Charles M. P. Hyland, Charles J. Hyland,
Christine Keen, Sue Krug, John Kuehn, Stephanie Luzier, Avery Marsteller,
Amy Pepper, Leslie Porter, Annie Shaw, Jose Tenenbaum,
Louis Van Rafelghem, Therese Van Rafelghem, David Tiktinsky,
Li-Ching Wang, Dee Weiss.





SHOW TABLE: September 13, 2010 Thanks to those who bring items for sharing at the meetings.

<u>Exhibitor</u>	<u>Specimen (s)</u>	<u>Locality</u>
Jonathan Baum	Wulfenite	Locality not given
Frances Becker	Feldspar with Tourmaline	Crabtree Mine, Spruce Pine NC
Barbara Burr	Emerald	Crabtree Mine, Spruce Pine NC
Paul Campanella	Quartz*	Faceted at Wildacres last week
Stephen Campanella	Auverde? Quartz*	Faceted at Wildacres last week
Tom Caton	Dendritic Agate	Rockshop pile Western PA
Jeff Cessna	Fluorite Fl. LW, SW, & Phosphoresces Conglomerate sphere	Nager Mine, Gilgit, Pakistan Leesburg, Loudoun Co., VA
Mark Dahlman	Robotic Antarctic Meteorite Search Patch	
Susan Day	Ruggles Mine Sampler	Lebanon NH
Gerald Elgert	Alamo Breccia	Rachael NV
Don Greaves	Stony-iron Pallasite Meteorite	Fukang, China
Jonathan Harris	Heulandite* Calcite formation*	Havre de Grace MD Nat'l Limestone Q., Middleburg PA
Eric Kindahl	Chlorellopsis Colonia Stromatolite	Green River WY
Mike Landsman	Not listed	Alaska, Yukon, & UT
Gary Leaman	Hyalite Opal Amethyst	Spruce Pine NC Cut in class at Wildacres NC
David MacLean	Various	White Cloud Quarry, S. Platte CO Rock Shop
Avery Marsteller	Stellerite Cinnabar	Manassas VA OR
Wendell Mohr	Hematite	Morocco
Jeff Nagy	Malachite/Azurite/Chrysocolla*	Digges Copper Mine, Carroll Co. MD
George Reimherr	Babingtonite, Pumpellyite, Calcite	O & G Quarry, Southbury CT
Rod Towers	Pallasite Meteorite	Not Given
Jennifer Weiss	Sapphires	Dirt bought in NC



* = Self-collected or self made



All Photos by W. Mohr



SEPTEMBER PRIZES

Junior: Ryan Gunderson
Show Table: Gary Leaman
General Door Prize: Visitor, Ben Wang

Participate in the Show Table to increase your chances of winning a prize!

SHOWS and EVENTS



**19th Annual
GEM, MINERAL
AND FOSSIL SHOW**

Presented by the Northern Virginia Mineral Club, Inc. www.novamineralclub.org
Sponsored by the Dept. of Atmospheric, Oceanic and Earth Sciences at GMU

Date: **November 20 & 21, 2010**

Place: **Student Union II Building
George Mason University Campus
Braddock Rd. & Route 123, Fairfax, VA**

Hours: **Saturday 10-6, Sunday 10-4**

Admission: **Adults: \$5, Seniors & Teens (13-17): \$3,
Children 12 & under, Scouts in uniform,
and GMU Students w/ valid ID are FREE.**

\$1 OFF
1 Adult Admission with this card.

Demonstrations, Exhibits, and Door Prizes. Mini-mines for children to dig in and get free fossils & minerals. Over 20 dealers with Fossils, Minerals, Crystals, and Gems for sale.

*Use Parking Lot A (east), enter Lot A from Nottaway River Lane.
Look for our Courtesy Shuttle to Mineral Show*

October 30, 2010
26th Annual South Penn Rock Swap. Organized by: Central Pennsylvania Rock and Mineral Club and the Franklin Pennsylvania Rock and Mineral Club. South Mountain Fairgrounds (1.5 miles west of Arendtsville PA on Route 234.) Swapper's tables, \$10, Admission \$1. Fairgrounds are shared with a dog show so watch out for the dogs! Rockhounds?

**ULTRAVIOLATION 2010
FLUORESCENT MINERALS ONLY**
Guess who's turning 21?
If Your Rock Don't Glow You're at the Wrong Show
SHOW - SWAP - SELL

Presented by The Rock and Mineral Club of Lower Bucks County
Saturday October 30, 2010

9:00 AM to 4:00 PM

First United Methodist Church
840 Trenton Road
Fairless Hills, PA

\$2 donation - Kids 12 & under free

Food and Beverages available Door Prizes and Raffles

**Get into the glow
Come to the show**

ULTRAVIOLATION is the ultimate show for the fluorescent mineral enthusiast, whether a novice or serious collector. The show features many of the world's premier fluorescent mineral dealers who strive each year to bring the biggest, brightest and best fluorescent minerals to satisfy the insatiable cravings of the fluorescent collector. ULTRAVIOLATION highlights fluorescent minerals exclusively and is the next best thing to night collecting. You will not find a bigger or better fluorescent mineral show anywhere in the country. Alternating periods of darkness and room light provides the perfect environment to experience these beautiful and colorful minerals. Free admission and a fluorescent mineral specimen for each junior mineralogist 12 years and younger when accompanied by an adult.

*** We're turning 21!!! It's time to party***

Dealers
8' TABLE \$25 - ½ TABLE \$15

ADVANCED REGISTRATION FOR DEALERS IS ADVISED
SEND YOUR CHECK MADE PAYABLE TO:
Chuck O'Loughlin
130 Maple Terrace, Merchantville, NJ 08109-5010
856-663-1383 ultraviolation@yahoo.com

Warning - Collecting Fluorescent Minerals is habit forming

Hi! I'm Ralph "Glow father" Thomas and I approve this message and contrary to rumors, I am still undead and planning to attend my 21st Ultraviolation.

ULTRAVIOLATION IS THE DIFFERENCE BETWEEN "NIGHT AND DAY"

Announcing The 19th Annual Richmond Gem & Mineral Society...

2010 Fall Rock Swap

>>>>>>> Free Admission <<<<<<<<

Visitors (adults or children, from novice to expert) are always welcome, and may swap or purchase from among the various mineral, gem, fossil, shell, and lapidary specimens

Saturday, November 13, 2010
Hours: Opens at 9:00 am until 3:00 pm
(The Rock Swap is indoors - so come rain or shine)

Ridge Baptist Church Meeting Hall
1515 East Ridge Road,
Richmond, VA

(adjacent to the Church in a one story building with parking)

FOR MORE INFORMATION CONTACT (either):
Murray Rosenberg, Swap Chairman, 804-740-0019 or
Carl Miller, Club President, 804-310-8762

DIRECTIONS: The swap is at the same location as it has been since 1998, and is easy to find at a centralized location in Henrico County, near the Regency Square Mall and Douglas S. Freeman High School. Maps available upon request.

North or South of Richmond, Virginia
Use I-95 to Exit 79 to I-64 West (this is just north of Richmond City). Leave I-64 at Exit 181A (South) to Parham Road. Proceed south on Parham Road for about 1.5 miles and **turn left onto East Ridge Road**. (A right turn at this same intersection takes you onto Quicocassin Road and leads to the Regency Square Mall). The Ridge Baptist Church and Meeting Hall are about 400 feet on the right across the street from the new Kroger's Market. Meeting Hall is at the rear of the parking lot on the west side of the church. There is ample parking in front of the Meeting Hall.

East or West of Richmond, Virginia: Use I-64 and follow the directions above.

NOTES

- To defray the costs of the Swap, RGMS asks that Swappers donate a specimen(s) for future RGMS raffles and auctions
- Food and beverages are available at near-by restaurants.
- Tables are limited and no table reservations will be accepted. If you have your own tables, please bring them!

SWAPPERS--PLEASE LABEL YOUR MATERIALS

October 8, 2010 7:30 pm Chesapeake Gem and Mineral Society, rock and mineral auction, Women's Club of Catonsville, St. Timothy's Lane & Frederick Rd in Catonsville, MD



DINOSAURS IN OUR BACKYARD!

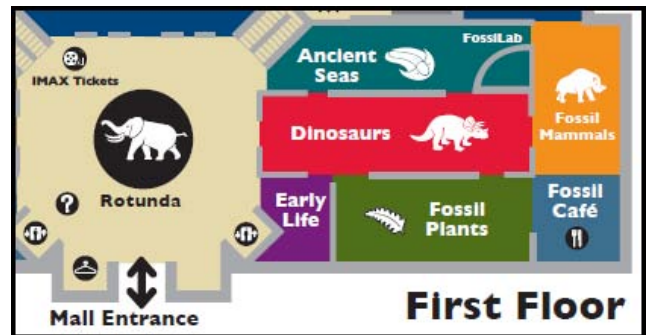


A new exhibit open indefinitely is in the first floor Smithsonian NMNH Fossil Halls. It stresses contributions amateur collectors make to the Museum’s collections and knowledge. From 225 to 65 million years ago, dinosaurs lived everywhere on Earth—including around DC. This case explores how scientists piece together information about dinosaur biology, ecology, and evolution from fossil specimens, and the important contributions amateur collectors make to the Museum’s collections and knowledge. Visitors can see a unique skeleton impression of a baby dinosaur of a species new to science. Go see it!

DINOSAURS: GIANTS OF PATAGONIA

Film at the NMNH Johnson IMAX® Theater. Takes audiences on a unique 3D journey into the world of the largest know dinosaurs and, in the process, explores some of the great paleontological discoveries of modern time. Admission is charged.

Special Note: There is a parental notice at the beginning of this film which states the large and loud 3D dinosaurs may not be suitable for younger viewers.



Celebrate Science:
Don't miss the Expo on the National Mall
Festival Dates: Expo Dates:
10/10/10 - 10/24/10 10/23 & 10/24
 October 23 and 24, 2010, 10am-5:30pm
 Over 1500 hands-on science and engineering activities
 More than 50 stage shows on four stages
 A free event for all ages

Thanks to NVMC Mineral Newsletter September 2010

NATIONAL FOSSIL DAY

For Families. 11:00 am to 4:00 pm. Location NMNH First Floor Fossil Halls and on the National Mall between 14th and 15th Streets. Celebrate fossils as clues for understanding the history of life with a day of exploration in the Museum’s Fossil Halls and on the National Mall. Enjoy hands-on activities at our Discover Carts; watch paleontologists and volunteers at work in the FossilLab; meet scientists who study fossils; and collect your own fossils at a Fossil Dig on the National Mall. Free and open to the public

Board of Directors is getting cranky! Help appease them. Appeals are still open for:



A new Rockhounder **EDITOR** by Jan. 1st. Skills that are needed: using computer word processing or publishing programs. Detailed job description and directions are available. The editor automatically becomes a member of the Board of Directors. Contact Eric Kindahl, <Kindahl@hood.edu> or 301 829 2161 if you are willing help in this position.

A **LEADER** for the 6 to 9 year olds in the FRA program. Plenty of support will be provided by Holly McNeal. If the proposed program at 7 pm to 8 pm can be accomplished you will still be able to attend the main meeting lecture. Contact Holly at <fra_advisor@glmsmc.com> or 301 605 7179 to volunteer.





WEB SITES

By Wendell Mohr

The Diamond Invention at <http://www.edwardjayepstein.com/diamond/prologue.htm> is by Edward Jay Epstein. This site is a cyber book originally put out in 1982. You don't even need Kindle (or even Kindahl) to help you read this one. Including 22 chapters plus end notes, this will keep you reading into the winter. It is an investigative exploration of the industry and a little cynical. Thanks to Phil Krug for the lead on this one. ●After a diamond mine tour in South Africa, the trip leader said "Lets get de beers at de bar down de street."●



The Expanding Earth Animation is an exploration of a theory put forth in the 1930's by Warren Clay. See <http://geology.about.com/od/platetectonics/a/Expanding-Earth-Animation.htm?nl=1>, read the text and be sure to click on "watch this animation." The Australian geologist posited that the earth's expansion explains the current geography exactly. For reasons I know not, I was unaware of this simplistic but somewhat convincing theory. Read about it and view the modeling and make up your own mind about its validity. ●Two solutions to plate tectonics: Polygrip and Fix-0-Dent.●



Colbaugh Processing is a commercial site, as usual, not endorsed here, as the source for Kingman (AZ) turquoise. At <http://www.colbaugh.net/> you may investigate facts, history, and general information about turquoise. The operation mines and produces gem grade material from a site about 7 miles N. of Kingman. "Our Products" gives you an idea of the material they produce including per pound prices. There are pictures that may be enlarged by clicking on them. You can make a virtual tour of their mine which ends with close ups of the vein deposits. ●The guy that originally owned the property where the turquoise mine is located had an inkling that there was value there. He subdivided and sold his backyard to the mining company....the ultimate yard sale.●



Credit R. Weller
Cochise College



In a conversation with one of my Rockhounder friends: "Are you going with us on the field trip tomorrow and do you need directions?" Friend: "I'm all set. I have the address, a GPS, and a GPS override." "What's a GPS override?" I asked. Friend: "My wife!"

MEMBER NEWS

Catch the September/October issue of Rocks and Minerals Magazine, page 453, for "Who's Who in Mineral Names." Our member **Patrick Haynes** is featured in an article written by Peter Modreski of the USGS in the Denver area. Haynesite is a hydrated uranyl selenite hydroxide discovered by Patrick near Blanding Utah and bearing his name. He has discovered several other species during extensive collecting in the west.

Lisa Carp served as speaker-in-residence at the fall session of Wildacres retreat in North Carolina. Thanks, Lisa, for sharing your experiences, knowledge and examples of gemstones in imparting education to the attendees.

Keep **Andy Muir** in your thoughts when he undergoes hip replacement on October 27th. We wish you success. And Andy, don't pay any attention at all if you hear the doctor say "oops!"

AUCTION!

Member, David Ballard has decided to dispose of the collection that he and Nancy accumulated over a lifetime. An auction of their fine material will be conducted on Saturday October 9th, 2010 (with rain date Sunday the 10th).



The Particulars:

Location: 16812 Baederwood Lane, Derwood MD 20855-2011.

Open to all, members and non-members.

9:00 am Viewing of material by all interested.

10:00 am Auction begins.

Roughly 100 Individual Pieces + 22 Lots of Equipment + 90 Other combined lots.

Minerals, Fossils, Lapidary, and other various materials

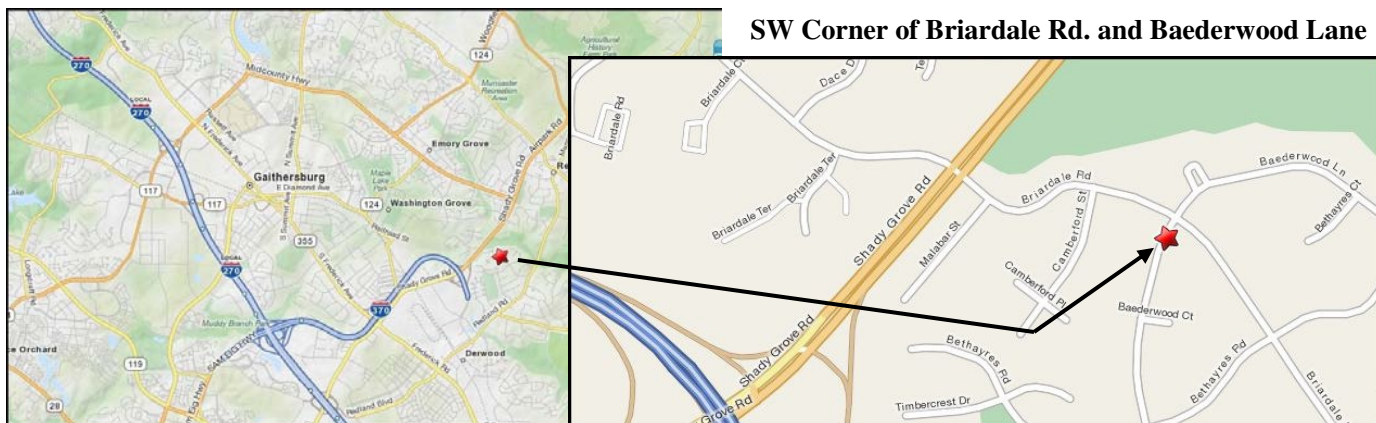
Many quality specimens will be auctioned. They range from thumbnail size to huge. Better material will be auctioned individually by piece. Lots include many various fine colorful specimens from world-wide localities including some rare and opals and gold. Others will be sold in lots in flats and boxes which contain materials of like nature. Included are many agates, geodes, petrified wood, slabs, and cutting rough as well as minerals.

Also there are fluorescents, fossils, archeological artifacts, wall decorative art, display easels, etc.

A large number of books and publications.

Information: Mark Dahlman <pastpresident@glmsmc.com>, Phone 301 428 0455

Continued on Page 13



AUCTION (Continued from page 12)

Auction by GLMSMC but proceeds to David Ballard:

- **Micromount cabinet** 20.25 inches wide X 22 ¼ inches high X 14 ½ inches. Excellent dark wood.
- **Micromount cabinet** 20 inches wide X 12 1/2 inches high X 13 inches. Light wood.
- **Microscope** Spencer (American Optical) "Cycloptic" model, marked "Inspection" with a light source. Not a zoom 'scope, but has magnifications, from about 15 to 40 X .

Silent auction by The Micromineralogists of the National Capital Area Inc.:

- **Mineral rough** for preparation to micromounts.

Auction by the Gem, Mineral, and Lapidary Society of Montgomery County MD., Inc.:

Equipment:

- JIGL-LAP 18 inch vibratory lap, Large (25 inch) vibrating lap, maker unknown.
- 18 inch diamond saw by Craft Western Equipment.
- Diamond band saw by Gryphon.
- Trim saw and integral polishing wheel by Raytech model GL-M.
- Trim saw(6 inches) and two integral polishing wheels by Frantom.
- Ultrasonic cleaner Branson Model 2200 large.
- Ultrasonic cleaner Branson Model 12 small.
- Small beam balance in plush liner case, Balance 310 grams Ohaus Dial o gram, Balance 311 grams Cent-o-gram, and Balance 2610 grams Dec-o-gram.
- Foredom tool.
- Magnifying glass.
- Goose neck lamp.
- Rock trimmer 3 inch capacity.
- 2 hard hats.
- 2 electric motors.
- Ultraviolet light 4 watts, small.
- Microscope, Nikon Model SMZ-10, stereo. zooms from 0.66 to 4X, with pair of 10 X eye pieces. AFX-2 auto-exposure microscope camera adapter, complete, with "antique" film camera, with all the accessories. All sold as one lot.
- Microscope, Bausch and Lomb popular stereo zoom. model number unknown, zoom range from 0.7 to 3 X, with 10 X Nikon eyepieces. No accessories.

Minerals, Fossils, Geodes, Agates, Petrified wood, Cutting rough, slabs, Easels, Archeological artifacts, Wall decorative hangings etc, as described on page 1.



Note for GLMSMC Members. We need additional help to make this event a success. Indicate your willingness to Mark Dahlman <pastpresident@glmsmc.com>, Phone 301 428 0455. Needed: auctioneers, runners, sale recording, security.

BOARD OF DIRECTORS

President- Eric Kindahl, 301 Violet Court, Mount Airy MD 21771-5206	301 829 2161
Vice President- Owen Powers, 2810 Abilene Drive, Chevy Chase MD 20815-3015	301 587 9275
Secretary- Jeff Cessna, 12116 Cliftdale Drive, Silver Spring MD 20904-1941	301 680 7963
Treasurer- Andy Muir, 17949 Hazelcrest Drive, Gaithersburg MD 20877-3761	301 990 1370
Junior Advisor- Rod Towers, 19609 Gunners Branch. Rd., Germantown MD 20876-2738	301 972 1264
Field Trip Chairman- Jonathan Harris, 11932 Goya Drive, Potomac MD 20854-3313	301 545 0808
Membership Chairman- Doug Baum, 11205 Golden Meadow Court, Germantown MD 20876-1740	301 515 4641
Show Chairperson- Mark Dahlman, 11906 Scovell Terrace, Germantown MD 20874-2532	301 428 0455
Property Manager- Joel Rosen, 833 Rampart Way, Union Bridge MD 21791-9325	410 775 7937
Immediate Past President- Mark Dahlman, 11906 Scovell Terrace, Germantown MD 20874-2532	301 428 0455
EFMLS Liaison- Wendell Mohr, 9509 Emory Grove Road, Gaithersburg MD 20877-3501	301 926 7190
Bulletin Editor- Wendell Mohr, 9509 Emory Grove Road, Gaithersburg MD 20877-3501	301 926 7190

Charter Member: Dan Spielman; Life Members: David Ballard, Jack Busch, Larry Harrison,
Wendell Mohr, Charlotte Morrison, Juan Proaño, and Dan Spielman

Society Address: Gem, Lapidary, and Mineral Society of Montgomery County MD., Inc.
P. O. Box 444, Gaithersburg MD 20884-0444 Web Site: <http://www.glmsmc.com/>
All Society correspondence is to be sent to this address except that which is intended for the
Rockhounder and its editor. Such items are to be sent to the editor's home address.



Permission to copy material printed herein, except specifically copy-righted items, is granted, provided credit is given.



Award Winning
Bulletin
EFMLS, AFMS
Editor's Contests



TIME SENSITIVE
DATED MATERIAL
FIRST CLASS MAIL



THE ROCKHOUNDER
Gem, Lapidary, and Mineral Society
Of Montgomery County, Md., Inc
Wendell C. Mohr, Editor
9509 Emory Grove Road
Gaithersburg MD 20877-3501

